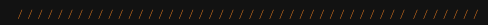


Abgen

Trusted LED Supplier



PL lito



THE SMART CHOICE

CURVE | QUICK | SOLID

FEATURES

01 Fast and Accurate Curve System

- Innovative Side Lock Design

- Front & Rear Module Maintenance
- Edge Protection
- Quick Swappable Power Box

Quick Installation and Maintenance 02

03 Ultra Solid Performance

- Higher Image Quality
- New Cabinet Frame
- Waterproof Design

- Platform Design
- Hanging Bar & Stacking System
- Accessories

Easy to Install 04

THE SMART CHOICE

CURVE | QUICK | SOLID



P3.9 / P4.8



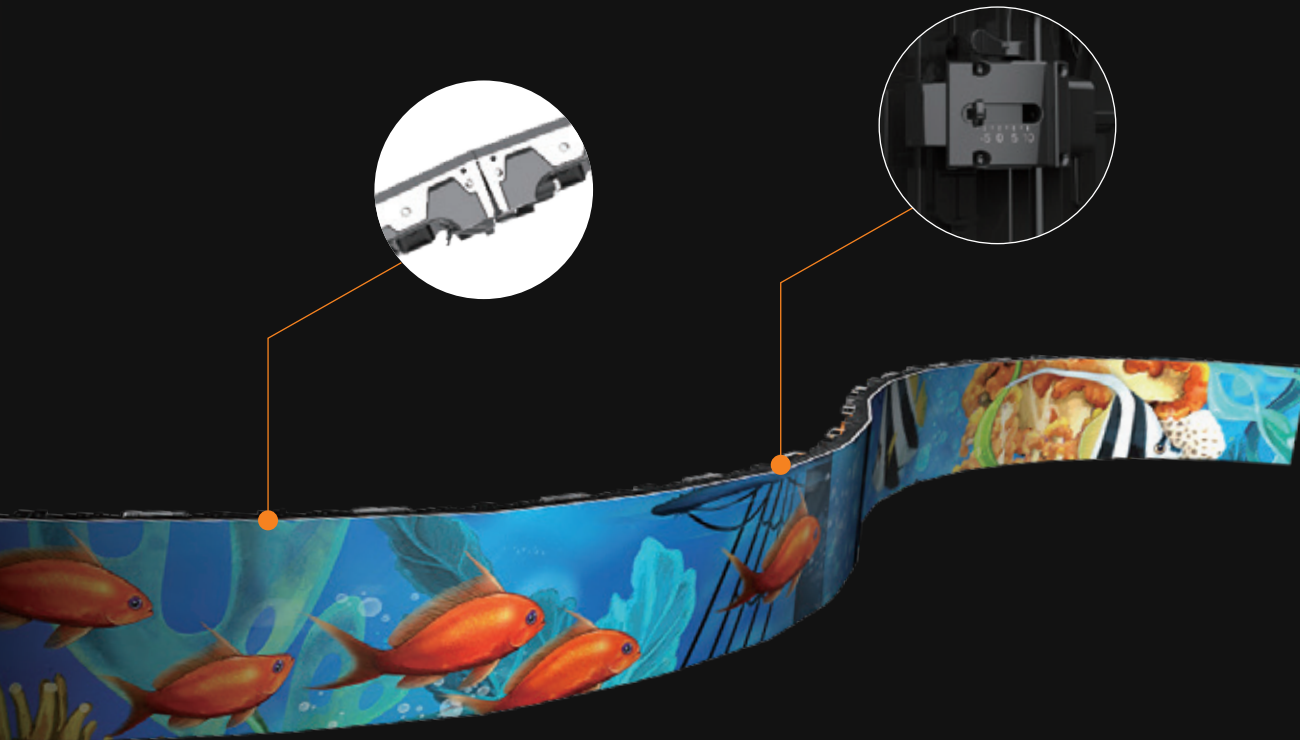
P2.5 / P2.9 / P3.9 / P4.8

01

Fast and Accurate Curve System

· Innovative Side Lock Design





- **Innovative Side Lock Design**

There is no need of any additional tool to quickly adjust from flat screen to a curved one.
Enable $-7.5 \sim -10^\circ$ at every 2.5° step, support $+10^\circ, \pm 7.5^\circ, \pm 5^\circ, \pm 2.5^\circ, 0^\circ$
Absen proprietary locking system, more solid, more accurate.

- Front & Rear Module Maintenance
- Edge Protection
- Quick Swappable Power Box

Quick Installation and Maintenance

02



- **Front & Rear Module Maintenance**

Supports front & rear maintenance, easy to replace module.



- **Edge Protection**

Step designed on bottom of the cabinet, keep LEDs away from ground.






- **Quick Swappable Power Box**
Replace in seconds with a quick release system.
Serviceable from the back without tools.



- **One Man Installation**
Quick and simple to use top locks, designed for easy one man handling



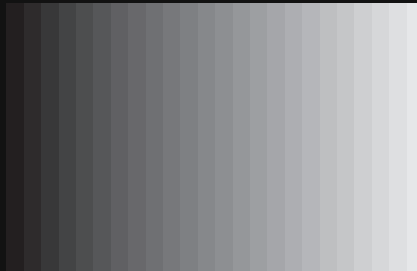
The Opening Ceremony

03 Ultra Solid Performance

- Higher Image Quality
- New Cabinet Frame
- Waterproof Design

- **Higher Image Quality**

Combined with grey scale coding technology that is human eye friendly, the new control system has greatly improved the industry-common problem of losing grey scale at low brightness, to provide a much more vivid image.



After

Before



**New Cabinet Frame Is Stronger,
More Accurate**

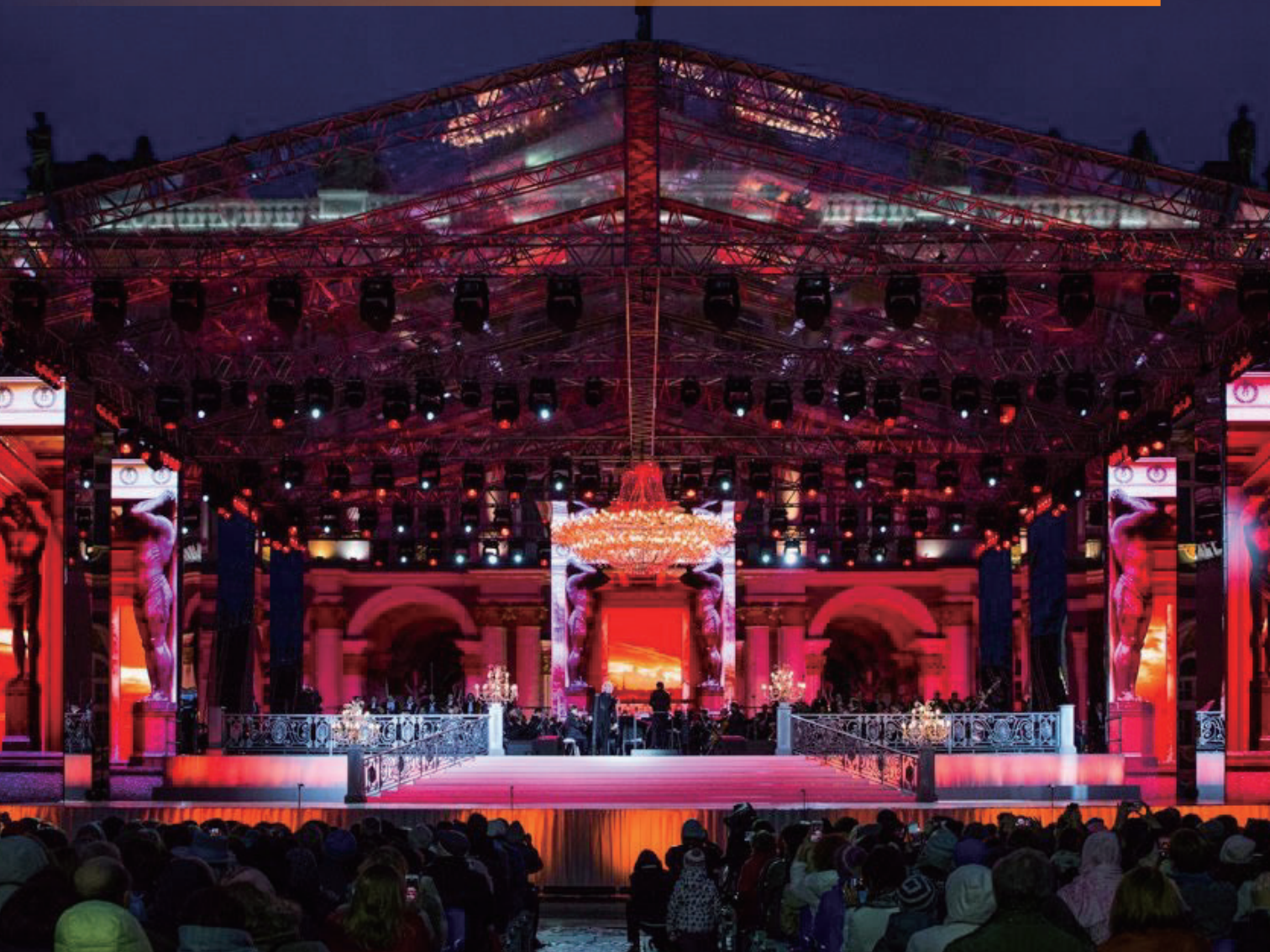
- **Waterproof Design**

IP65/54 waterproof design for PL3.9W lite & PL4.8W lite, ultra reliable in all weather conditions.



- Platform Design
- Hanging Bar & Stacking System
- Accessories

Easy to Install 04



- **Platform Design**

The PL Lite V10 series adopts a platform design to help customers save cost. Modules with different pixel pitches can be used on one platform.



Indoor platform of common use

Applicable pixel pitches: 2.5mm, 2.9mm, 3.9mm



Outdoor platform of common use

Applicable pixel pitches: 3.9mm, 4.8mm

- **Lighten Up and Go Large**

Super lightweight and twice the size, perfect for the operational demands of extra large outdoor display applications



Lightweight

Panel weight only
13Kg

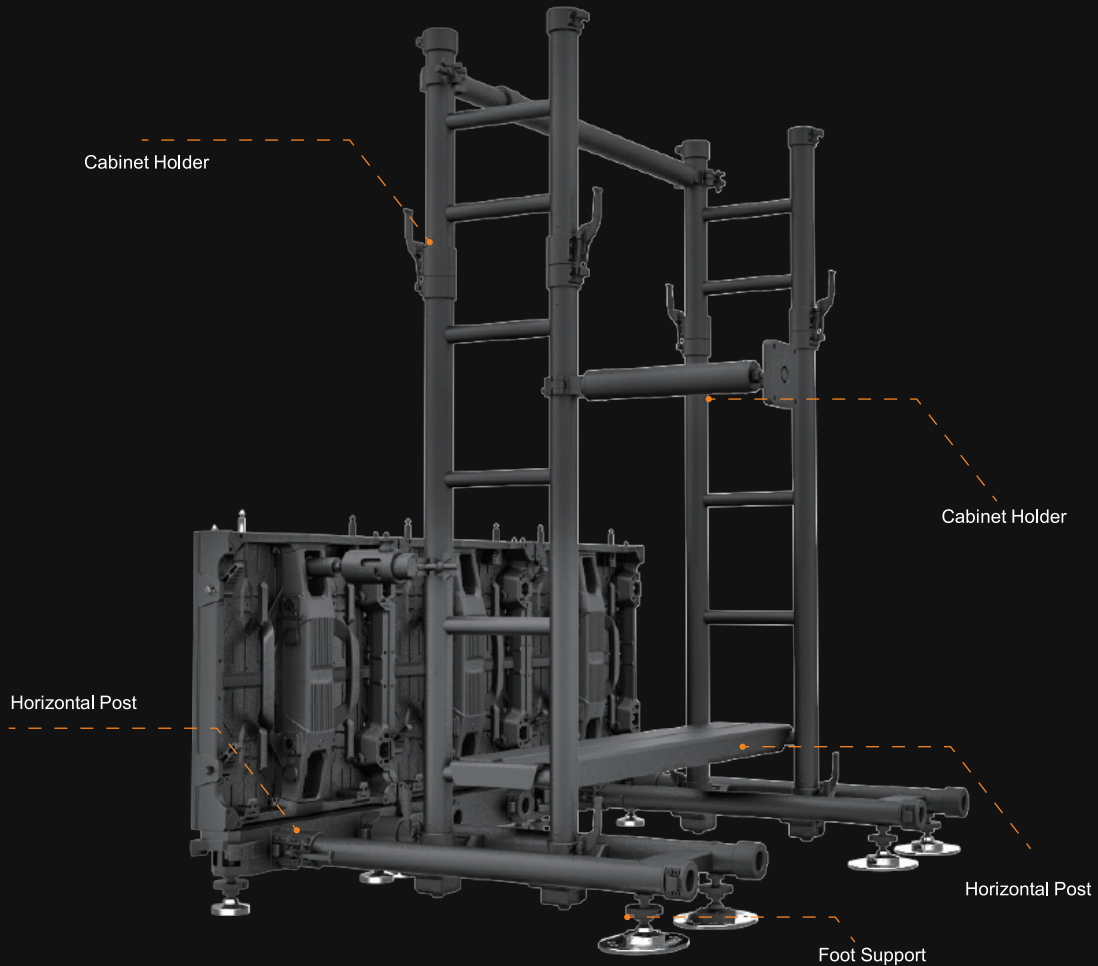
More than
20% lighter
than regular products

Quick

One man installation
Quickly service power box

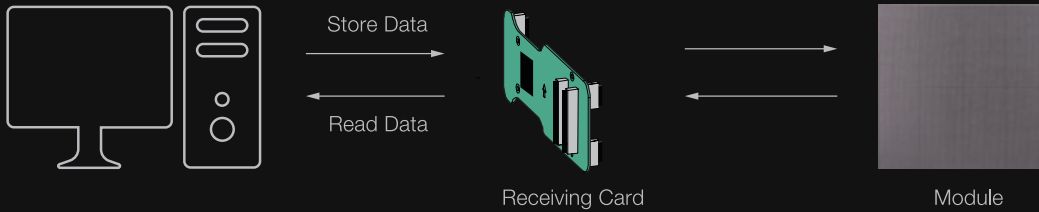
- **Stacking**

Designed by industry veteran, the latest Universal Stacking System is simple to use, reliable in quality, with all details considered from massive experience of on field use. The tool free installation design makes it a lot easier for technicians who will never need to look around for tools.



- **MoM**

Memory on module design enables to store data in both receiving card and the modules. When module or receiving card is replaced due to repair reason, there is no need of re-calibration.



- **Shipping**

Super lightweight 6 in 1 flight case, half weight of ordinary design. Save weight, save cost



6 In 1 Flight Case

- **Processing**

Premium image quality, 4K processing



- **Hanging Bar**

Super lightweight, simple to use hanging bars with integrated curve plate. Stringent pulling strength test to assure safe use, guaranteed reliability.



Double Hanging Bar

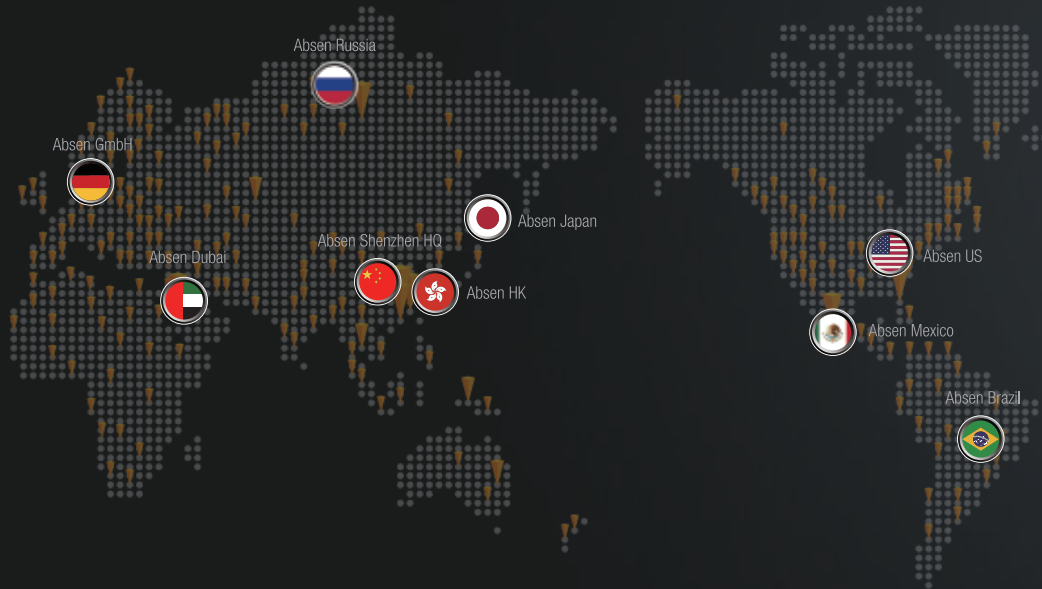


Single Hanging Bar

Hanging Bar comes in two styles and sizes

- **About Absen**

Established in 2001, Absen (SZSE: 300389) is the world's leading LED display products and service supplier. Absen's products are exported to more than 140 countries and regions in America, Europe, Australia, Asia, Africa, etc., and have been used in the Presidential press conference, CIIE, FIFA World Cups, NBA games and Times Square. Delivering more than 50,000 installations, Absen produces best in class products for DOOH , rental & staging , commercial display , data visualization, conference and virtual production, with the export volume of LED products being NO.1 for 12 consecutive years.



SPECIFICATION

| Parameters | PL2.5 Lite V10 | PL2.9 Lite V10 | PL3.9 Lite V10 | PL3.9 XL Lite V10 | PL3.9W Lite V10 | PL3.9W XL Lite V10 | PL4.8W Lite V10 | PL4.8W XL Lite V10 |
|--|----------------------|-------------------|-------------------|----------------------|--------------------|-----------------------|--------------------|-----------------------|
| Control system | NovaStar | | | | | | | |
| LED type | Black SMD1515 | Black SMD2020 | Black SMD2121 | Black SMD2121 | SMD1921 | SMD1921 | SMD1921 | SMD1921 |
| Pixel pitch (mm) | 2.5 | 2.97 | 3.9 | 3.9 | 3.9 | 3.9 | 4.8 | 4.8 |
| Panel dimensions (WxHxD, mm) | 500x500x88 | | | 500x1000x88 | 500x500x88 | 500x1000x88 | 500x500x88 | 500x1000x88 |
| Panel resolution | 200x200 | 168x168 | 128x128 | 128x256 | 128x128 | 128x256 | 104x104 | 104x208 |
| Panel weight (kg) | 7.6 | | 8 | 11.7 | 7.8 | 12.6 | 7.8 | 12.6 |
| Panel material | Die casting aluminum | | | | | | | |
| Module size (WxH, mm) | 250x250 | | | | | | | |
| Brightness (nit) | 1000 | 1000 | 1000 | 1000 | 4500 | 4500 | 4500 | 4500 |
| Refresh rate (Hz) | 3840 | 3840 | 3840 | 3840 | 3840 | 3840 | 3840 | 3840 |
| Grayscale (bit) | 14 | 14 | 14 | 14 | 14 | 14 | 14 | 14 |
| Contrast ratio | 5500:01:00 | 5500:01:00 | 7400:01:00 | 7400:01:00 | 4000:01:00 | 4000:01:00 | 4000:01:00 | 4000:01:00 |
| Color temperature (K) | 6500 | | | | | | | |
| Viewing angle (H/V, °) | 140/140 | 140/140 | 140/140 | 140/140 | 140/120 | 140/120 | 140/120 | 140/120 |
| Drive mode | 1/20 | 1/28 | 1/16 | 1/16 | 1/8 | 1/8 | 1/7 | 1/7 |
| AC operating voltage(V) | 100~240 | | | | | | | |
| Power consumption (max./avg., W/m ²) | 580/190 | 540/180 | 540/180 | 540/180 | 570/190 | 570/190 | 570/190 | 570/190 |
| Storage temperature (°C) | -40~+60 | | | | -40~+60 | | | |
| Operating temperature (°C) | -10~+40 | | | | -20~+50 | | | |
| Storage humidity (RH) | 10%~90% | | | | | | | |
| Operating humidity (RH) | 10%~90% | | | | | | | |
| IP rating (front/rear) | IP40/IP21 | | | | IP65/IP54 | | | |
| Certification | FCC, CE, ETL, RoHS | | | | | | | |

★ Shenzhen Absen Optoelectronic Co., Ltd. reserves the right to modify product design, specifications, and parameters without further notice.
Photos are used for illustration purpose only as products may differ from these photos. All rights reserved by Shenzhen Absen Optoelectronic Co., Ltd.

SPECIFICATION

| Parameters | PL2.5 Lite V10-Cube | PL2.9 Lite V10-Cube | PL3.9 Lite V10-Cube | PL3.9W Lite V10-Cube |
|---|----------------------|---------------------|---------------------|----------------------|
| Control system | NovaStar | | | |
| LED type | Black SMD1515 | Black SMD2020 | Black SMD2121 | SMD1921 |
| Pixel pitch (mm) | 2.5 | 2.97 | 3.9 | 3.9 |
| Panel dimensions (WxHxD, mm) | 500x500x88 | | | |
| Panel resolution | 200x200 | 168x168 | 128x128 | 128x128 |
| Panel weight (kg) | 7.7 | | | 7.8 |
| Panel material | Die casting aluminum | | | |
| Module size (WxH, mm) | 250x250 | | | |
| Brightness (nit) | 1000 | 1000 | 1000 | 4500 |
| Refresh rate (Hz) | 3840 | 3840 | 3840 | 3840 |
| Grayscale (bit) | 14 | 14 | 14 | 14 |
| Contrast ratio | 5500:1 | 5500:1 | 7400:1 | 4000:1 |
| Color temperature (K) | 6500 | | | |
| Viewing angle (H/V, °) | 140/140 | 140/140 | 140/140 | 140/120 |
| Drive mode | 1/20 | 1/28 | 1/16 | 1/8 |
| AC operating voltage(V) | 100~240 | | | |
| Power consumption (max./avg., W/m ²) | 580/190 | 540/180 | 540/180 | 570/190 |
| Storage temperature (°C) | -40~+60 | | | -40~+60 |
| Operating temperature (°C) | -10~+40 | | | -20~+50 |
| Storage humidity (RH) | 10%~90% | | | |
| Operating humidity (RH) | 10%~90% | | | |
| IP rating (front/rear) | IP40/IP21 | | | IP65/IP54 |
| Certification | FCC, CE, ETL, RoHS | | | |

★ Shenzhen Absen Optoelectronic Co., Ltd. reserves the right to modify product design, specifications, and parameters without further notice.
Photos are used for illustration purpose only as products may differ from these photos. All rights reserved by Shenzhen Absen Optoelectronic Co., Ltd.

Absen Optoelectronic Co.,Ltd

18-20F Building 3A, Cloud Park, Bantian,
Longgang District Shenzhen, 518129, P.R.China
T: +86-755-89747399 E: absen@absen.com
F: +86-755-89747599 W: www.absen.com

Absen Inc.

7120 Lake Ellenor Drive, Orlando,
Florida 32809, USA
T: +1-407-203-8870 E: info@usabsen.com
F: +1-407-203-8873 W: www.usabsen.com

Absen GmbH

Hessenring 4c, 64546 Moerfelden-Walldorf (Frankfurt am Main),
Germany
T: +49 (0) 6105 718941-0 E: europe@absen.com
F: +49 (0) 6105 718941-29 W: www.absen-europe.com